

NHHA Hospital Capacity Situational Awareness Update

Weekdays March 27 - April 2, 2025

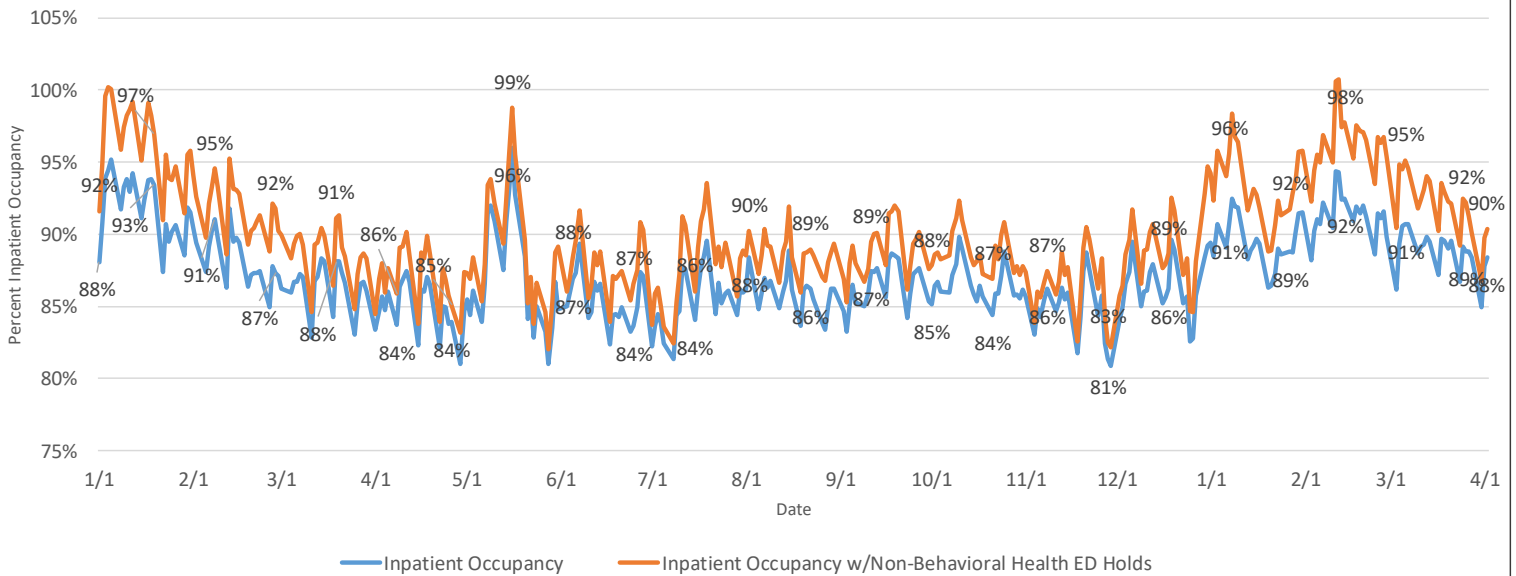
Hospital Census

Staffed Bed Status	March 27	March 28	March 31	April 1	April 2
Total Staffed Inpatient Beds Filled	2,526	2,521	2,371	2,457	2,499
Total Staffed Inpatient Beds Available*	318	330	420	342	327
Inpatient Occupancy	88.8%	88.4%	85.0%	87.8%	88.4%
Inpatient Occupancy with ED Holds**	91.2%	90.1%	86.7%	89.8%	90.3%

*Note: Does not include available ED beds

**Does not include behavioral health holds

2024 -2025 Hospital Inpatient Capacity



Emergency Department Holds

ED Hold Metric	March 27	March 28	March 31	April 1	April 2
Non-Behavioral Health	69	48	50	56	54
Adult Behavioral Health	41	38	41	32	40
Pediatric Behavioral Health	11	8	18	15	17

Source: Juvare
30 hospitals reporting

